

# STEELSHIELD FL PLANT ROOM DOOR

Fully Louvred Steel Doors & Panels

Data Sheet

# Steel Shield - External Door

Secure perimeter door, ensuring optimum protection from air, wind and water. Provides a secure function for personnel access or means of escape.

## Design



Door leaf thickness  
55mm Bonded



Flush Astragale  
Sheet thickness  
1.2/1,5mm

## Main function



Personal Access



Means of Escape

## Additional performance characteristics Under 14351-1



Air permeability  
npd



Water tightness  
npd



Resistance to wind load  
npd



Thermal transmittance  
(U Value) npd



Acoustic performance (dB)  
npd



Ability to release  
BSEN 1125 or 179

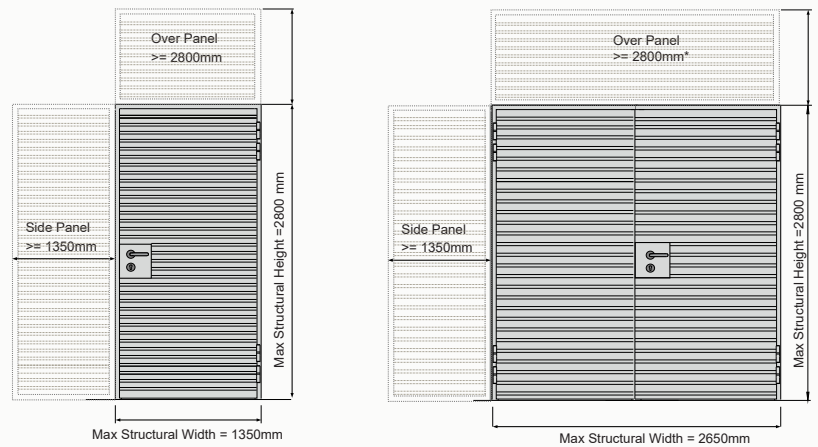


Security  
npd



Fire rating  
NON

## Dimensions (mm)



\*Panels over 1350mm in height will have a central split

## Product description

Description	Steel Shield FL
Type	Steel Fully Louvred Plant Room door
Use	Security door with CE marking for fitting in external walls for use as a Personnel Access or Means of Escape door
CE Marked to	EN 14351-1
Leaf thickness	55mm
Steel thickness leaf	2.0mm
Astragale	Flush strike side
Steel thickness frame	2.0mm
Door leaf leading edge	On strike or meeting edge of leaf
Design	Twin skinned bonded/ mechanical fixed (Non welded) around core
Surface finish	Door leaf and frame magnelis enhanced corrosion steel. PPC to your choice of RAL or BS4800 colour.
Security bolts	12mm dia in between each hinge pair
Core	2.0mm Louvre Blades giving 50% air flow
Over & Side Panels	Available as solid, louvred or Glazed

## Finish

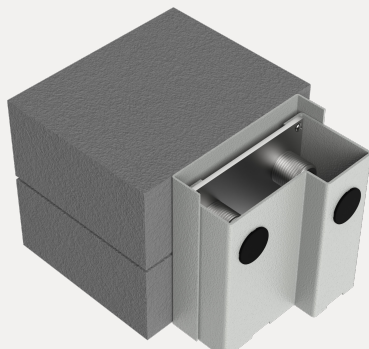
In house applied and highly durable external polyester powdercoat to RAL or BS4800 colour reference. 7 year warranty\* on finish for adhesion and colour stability.

\*C3 non marine environment



## Standard frame steel shield

Standard single rebate frame



Frame sheet thickness 1.5mm

Rapid fit, adjustable screw system with expanding sub frame to jambs & head

Surface finish  
Magnelis enhanced corrosive resistant steel.

Frame seal

All-round on 3 sides, black.

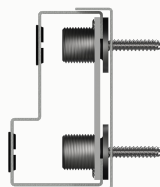
Fitting possible in:

Brickwork/concrete  
Gas concrete  
Prefabricated wall  
Composite Panel,  
Steel Work

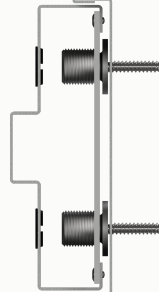
## Door Frame Options

Steel shield external doors come with a choice of frames to suit the widest possible structural doorway constructions. As standard they come with the rapid fit "jacking screw" arrangement and adjustable sub frame channels that allow our doors to have the correct tolerance. This ensures simple installation, whilst expanding to fill the structural opening and leave a neat joint ready for mastic to be applied.

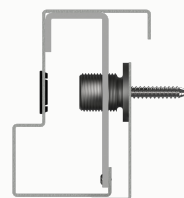
Standard Single Rebate



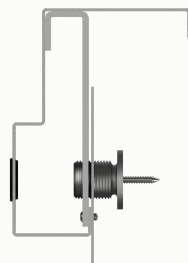
Optional Double Rebate



Optional Single Corner



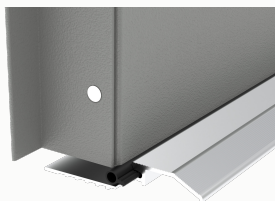
Optional 2 Part Wrap Around



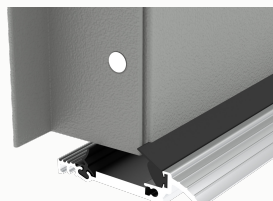
Custom Frames: As well as these standard design solutions our manufacturing and design facilities can deliver custom frames to suit any structural opening detail you need to install our doors into.

## Threshold Options

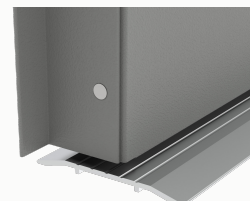
A: 12.5mm High Raised Outward Opening



B: 15mm High Raised Inward Opening



C: 7mm High Sloped Transition



## Standard Hardware Fittings

Level handle set	Arrone 800 series DIN standard mortice lock range offering, sashlock, deadlock, nightlatch, latch, toilet lock and escape sashlock. Stainless steel 19mm dia round bar bolt through lever tested to grade 3 BSEN1906 and stainless steel security escutcheon.
Hinges and closing devices	4 No Arrone 8782 stainless steel lift off hinge, Class 14 to BSEN 1935 c/w 15mm security bolt ( per pair). ASSA 200, 300 Surface mgt door closer c/w trim plate in silver finish.
Door bottom edge	U-profile to accommodate optional automatic drop seal or concealed floor sweep.
Profile cylinders	Supplied in optional configuration, choose from cylinder & turn, double cylinder, single cylinder. Standard differ supplied for multiple doors. Master key available upon request.
Means of escape devices	BS EN 1125 compliant 300 series from Briton, 376 2 point bolt, 378 single point latch 1413 Lever or Knob outside key access. BS EN 179 compliant 300 series from Briton, 372 2 point panic pad, 1438 single point panic pad. Arrone din std mortice escape sashlock c/w lever handle.